

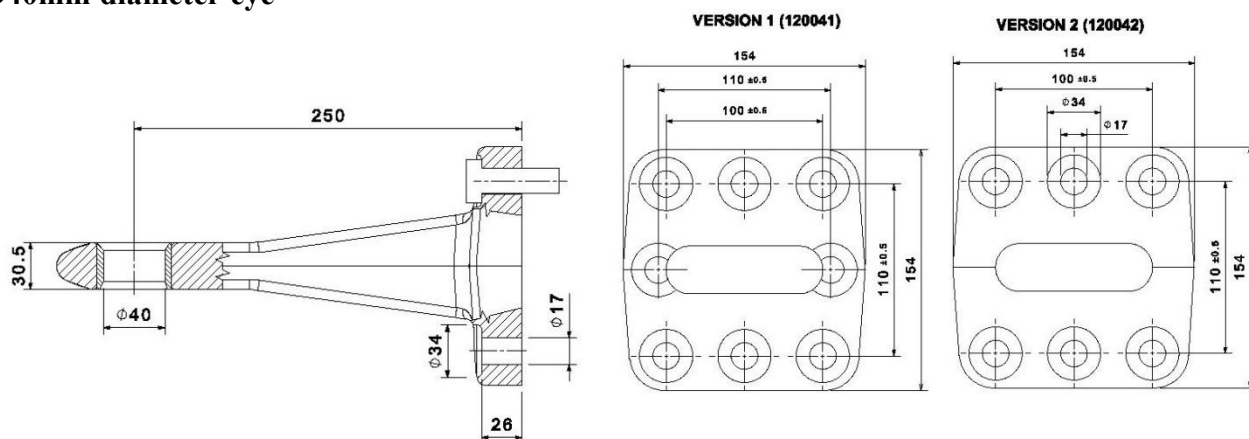
Installation and operation instructions



Wear limit dimensions : Eye bush 41,5 mm ; thickness 27,5 mm

Class : S

Ø40mm diameter eye



Drawbar eye type **120041** with two versions 1 and 2

ECE type approval no E4-55R-01 0762 ext.00

Class : S	D	130 kN
	Dc	100 kN
	S	1000 kg
	V	40 kN

Observe mounting instruction overleaf !



Mounting instructions of drawbar eye Ø40 with flange class S

When fitting (replacing) the drawbar eye please attend to the relevant statutory regulations and the particular information from the vehicle manufacturers.

The devices are only granted to connect with drawbar couplings of the classes S or type-approved drawbar couplings which are suitable to connect with drawbar eyes DIN 74054 or with equivalent drawbar eyes.

Remove oil from drawbar eye with flange and counter plate.

Fasten drawbar eye with flange to the drawbar using screws (8 screws for 120041 , 6 screws for 120042) M16x50 min. ISO 4762, quality 10.9 galvanized, oiled. Tighten crosswise by means of a torque wrench, from the centre to the outside.

First, all screws (8 screws for 120041, 6 screws for 120042) are tighten with a torque of 100 Nm. Final tightening is done by using a torque of - 240Nm.

If necessary, use nuts of quality 10 (use only safety nuts ISO 7042-M16-10).

Paint towing eye after having mounted it to the counter plate.

Within the scope of vehicle maintenance jobs the tightening torque of the fastening screws has to be checked by means of an appropriate torque wrench regulated for this purpose to 220 Nm. If the screws have slackened do not tighten up but replace by new ones.

